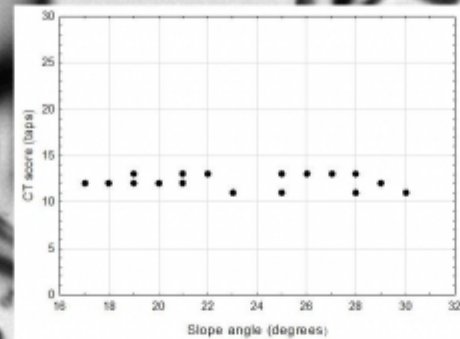


# The effect of changing slope angle on comp



This is an avalanche triggered by two experienced avalanche forecasters while digging a snow pit. Conducting stability tests in avalanche terrain is inherently dangerous since it exposes the observer to the potential of being caught in an avalanche.

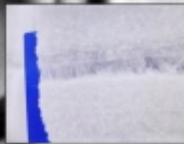


Dataset 1, Montana,  $p = 0.67$

Our fieldwork shows no significant change



We tested the effect of slope angle on compression tests (CTs) using similar methods as recent ECT work. We collected field data on three separate days with persistent weak layers. Our slopes exhibited gradual changes in steepness, allowing us to sample a variety of slope angles with minimal snow structure changes.



Karl W. Birkeland<sup>1</sup>, Edward Bair<sup>2</sup>, Dou

<sup>1</sup>U.S.D.A. Forest Service National Avalanche

<sup>2</sup>Earth Research Institute, UC Santa Ba

<sup>3</sup>Gallatin National Forest Avalanche C

This poster was presented at the 2014 ISSW in Banff, Canada. The entire six page paper can be read [HERE](#).

No Region, 2014-10-22